



Florida Standards  
Assessments (FSA)  
Spring 2021

**CHAPEL TRAIL ELEMENTARY**

# Agenda

- What are the Florida Standards Assessments?
  - Subjects and Grades Assessed
  - Test Schedule
  - Test Timing
  - Test Design and Test Item Types
  - State Science Assessment
  - Score Information
- How are FSA results used?
- Helpful Resources

# What are the Florida Standards?

- The Florida Standards were adopted in 2014 in English/Language Arts and Mathematics to help prepare Florida students for success in college, career, and in life by emphasizing analytical thinking skills.
- The Florida Standards Assessments (FSA) provides a more authentic assessment of the Florida Standards because they include multiple choice, create graphs, interact with test content, and write and respond in different ways than required on traditional tests.
- Question types will assess students' higher-order thinking skills in keeping with the higher expectations of the Florida Standards.

# Who participates?

- Per Florida Statute 1008.22, **all public-school students** are required to participate in the statewide assessment program.
  - All English Language Learners (ELLs) must participate in FSA assessments (including ELA). This includes ELLs who have been enrolled in school in the U.S. for less than one year.
  - Accommodations may be provided to students with a current Individual Education Plan (IEP) or Section 504 Plan.

# What subjects and grades are tested?

**All tests will be paper-based and MUST be given at the school.**

- **Grades 3-5 FSA English Language Arts (ELA) Reading**
- **Grades 4-5 FSA Writing**
  - A student must take both the Writing and Reading tests to receive an FSA ELA score.
- **Grades 3-5 FSA Mathematics**
- **Grade 5 Statewide Science**

# What are the test windows?

CTE	English Language Arts & Mathematics FSA			
	DATES	ASSESSMENT	GRADE	MAKE-UP DATES
Apr-21	4/6/21, 4/7/21	FSA ELA (2, 80 min Sessions)	3	4/13/21, 4/14/21
	4/12/21	ELA Writing Component (120 minutes)	4	4/15/2021
	4/9/21	ELA Writing Component (120 minutes)	5	4/16/2021

*Testing windows were extended so that schools can test all students.*

# What are the test windows?

May-21	5/4/21, 5/5/21	FSA <b>ELA</b> (2, 80 min Sessions)	4	5/10/21, 5/11/21
	5/6/21, 5/7/21	FSA <b>ELA</b> (2, 80 min Sessions)	5	5/10/21, 5/11/21
	5/11/21, 5/12/21	FSA <b>MATH</b> (2, 80 min Sessions)	3	5/17/21, 5/18/21
	5/13/21, 5/14/21	FSA <b>MATH</b> (2, 80 min Sessions)	5	5/17/21, 5/18/21
	5/18/21, 5/19/21	FSA <b>MATH</b> (2, 80 min Sessions)	4	5/24/21, 5/25/21
	5/20/21, 5/21/21	FCAT <b>SCIENCE</b> (2, 80 minute sessions)	5	5/24/21, 5/25/21

*Testing windows were extended so that schools can test all students.*

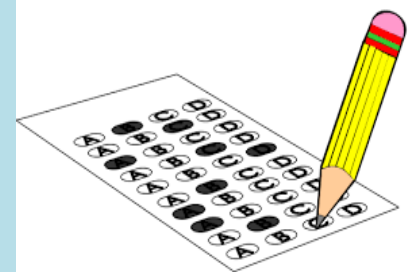
# Are the tests timed? **YES!**

- **FSA Writing – Grades 4 and 5**
  - 120 minutes (1 session)
  - A **3-minute break** after 60 minutes of testing
- **FSA ELA Reading – Grades 3, 4, and 5**
- **FSA Mathematics – Grades 3, 4, and 5**
- **Statewide Science – Grade 5**
  - 160 minutes over two days
    - 80 minutes – Day 1 (short break after 40 minutes)
    - 80 minutes – Day 2 (short break after 40 minutes)





# Paper-based Test Materials



- **Grade 3-5 ELA Reading & Mathematics**
  - Students will receive a Test and Answer Book
  - Students will work problems in their test and answer book
- **Grades 4 and 5 Writing**
  - Students will receive a Writing Planning Sheet and a Test and Answer Book
- **Grade 5 Science**
  - Students will receive a Test Book and an Answer Book/Sheet
- *Practice Tests have been developed by DOE. Students will have an opportunity to take a paper-based practice test at the school prior to the actual test.*
  - *Available on the FSA portal for public access.*  
*Go to [fsassessments.org](https://fsassessments.org) > Practice Tests*

# Test Design Information

- <https://fsassessments.org/about-the-fsas.html>
- Test Design Information:
  - Statewide Assessment Program Information Guide  
This document provides information about the Florida Standards Assessments (FSA) and the Next Generation Sunshine State Standards (NGSSS) assessments, including the considerations governing item and test development, the mechanics of item and test scoring, and the meaning of the different assessment scores.
  - Test Item Specifications and Test Design Summaries  
These documents are a resource that defines the content and format of the test and test items. Also, indicates the alignment of items with the Florida Standards.
    - Grade 3-5 Mathematics Test Item Specifications
    - Grade 3-5 ELA Test Item Specifications

# Test Design – ELA (Reading & Writing)

## ELA-READING CONTENT CATEGORIES

### Grades 3-5

Approximate percentage of raw score points for each category.

Reading Text Types	Literature - 50% Informational - 50%
Key Ideas and Details	15-25%
Craft and Structure	25-35%
Integration of Knowledge and Ideas	20-30%
Language and Editing	15-25%
Text-Based Writing (Grades 4-5)	Determined each year
Total Number of Items	56-60

## ELA

### PERCENTAGE OF POINTS BY DEPTH OF KNOWLEDGE (DOK)\* LEVEL Grades 3-5

DOK Level 1 (Low)	10-20%
DOK Level 2 (Mod)	60-80%
DOK Level 3 (High)	10-20%
Note: Text-based Writing (G4-5) component is a DOK Level 3 task.	
*DOK refers to the complexity level of the cognitive process demanded by a test item rather than the difficulty of the item. Level 1: Recall and Reproduction, Level 2: Skills and Concepts, and Level 3: Strategic Thinking	

### ❖ Grades 3-5 ELA Test Item Specifications

<https://fsassessments.org/about-the-fsas.html>

Approximately 6-10 items within the Reading and Language components listed above are field test items are included in the ranges above but are **not** included in the students' score.

# Test Design - Reading

- Two types of Reading passages:
  - **Informational:** provide readers with facts about a particular subject and may include magazine and newspaper articles, editorials, and biographies
  - **Literary:** written primarily for reader's enjoyment and may include short stories, poems, folk tales, and selections from novels
  - Students are also asked to evaluate and correct grade-level errors in a “draft” essay
- Approximate Word Count Range for Text or Text Set
  - Grade 3: 100-700
  - Grade 4: 100-900
  - Grade 5: 200-1000

# Test Design - Writing

- **FSA Writing (Grades 4 and 5)**
  - Writing component consists of one text-based constructed-response item
    - Students read a variety of texts and respond to a prompt
  - Prompt will ask for the student's opinion or ask the student to inform/explain
    - Students will draw upon the texts to provide evidence and information to support their claims or explanations
  - Writing Score (10 raw score points) – there are 3 domains:
    - Purpose, Focus, and Organization (4 points)
    - Evidence and Elaboration (4 points)
    - Conventions and Standard English (2 points)

# Writing Passage & Prompt

Read the "Should Elementary School Students Switch Classes?" passage set.

## Should Elementary School Students Switch Classes?

### Source 1: Difficult Decisions for Schools

by Lillian James

1 If your school is like most elementary schools, you stay with the same teacher to learn subjects like math, reading, science, and social studies. You might switch classes for gym, music, or art. But when you get to middle school, you'll likely have a different teacher for each subject. Some people wonder whether students should switch classes earlier than in middle school.

### Source 2: Deeper Learning Through Specialization

by Leon Samuels

6 Nearly every high school in the country has different departments for each subject. The math teacher has a math background. The science teacher has a deep understanding of earth science or physics. These teachers get to teach what they know and take pride in knowing it well.

### Source 3: One Student, One Teacher

by Lucille Ruby

13 Young children need guidance, support, and stability. According to Donna Snyder, a professional development expert, this is provided by children's classroom teachers. By staying in one classroom with one teacher for the whole day, the youngest students can bond with their teachers. This connection with their teacher gives the young student confidence and creates a safe environment for learning.

Write an article for the school newspaper in which you give your opinion about whether students in your school should switch classes for different subjects. Use information from the passages in your article.

Manage your time carefully so that you can

- read the passages;
- plan your response;
- write your response; and
- revise and edit your response.

Be sure to include

- an introduction;
- support for your opinion using information from the passages; and
- a conclusion that is related to your opinion.

Your response should be in the form of a multiparagraph essay. Write your response in the space provided.

Grade 5 Sample

# Writing Testing Tips

1. Read the prompt and determine whether it is asking for information/explanation, or an opinion/argument
2. Read the texts, looking for details to support information or opinion/argument
3. Use the Planning Sheet to organize thoughts and details
4. Write and edit response. **Make sure it contains:**
  - Clearly stated and strongly maintained idea or argument
  - Details from the passages to support idea or argument
  - Variety of sentence types and transitional strategies
  - Clear and effective expression and logical progression of ideas
  - Strong introduction and conclusion
  - Correct spelling and punctuation

# Test Design - Math

## MATH CONTENT CATEGORIES Grades 3-5 (CBT)

Approximate percentage of raw score points for each category.

Grade	Reporting Category	Percent of Test	Number of Items
3	Operations, Algebraic Thinking, and Numbers in Base Ten	48	60-64
	Numbers and Operations - Fractions	17	
	Measurement, Data, and Geometry	35	
4	Operations and Algebraic Thinking	21	60-64
	Numbers and Operations in Base Ten	21	
	Numbers and Operations – Fractions	25	
	Measurement, Data, and Geometry	33	
5	Operations, Algebraic Thinking, and Fractions	39	60-64
	Numbers and Operations in Base Ten	28	
	Measurement, Data, and Geometry	33	

## MATH

### PERCENTAGE OF POINTS BY DEPTH OF KNOWLEDGE (DOK)\* LEVEL Grades 3-5

DOK Level 1 (Low)	10-20%
DOK Level 2 (Mod)	60-80%
DOK Level 3 (High)	10-20%

*\*DOK refers to the complexity level of the cognitive process demanded by a test item rather than the difficulty of the item.  
Level 1: Recall and Reproduction, Level 2: Skills and Concepts, and Level 3: Strategic Thinking*

### ❖ Grades 3-5 Math Test Item Specifications

<https://fsassessments.org/about-the-fsas.html>

*Approximately 6-10 items within the Reading and Language components listed above are field test items are included in the ranges above but are **not** included in the students' score.*



# Reference Sheets

- Grades 4 & 5 Math will receive reference sheets
  - Grade 4 some formulas are provided on the reference sheet
  - Grade 5 some formulas may be included with the test item
- Grade 3 Math does not receive a reference sheet

## Grade 4 FSA Mathematics Reference Sheet

### Customary Conversions

1 foot = 12 inches  
1 yard = 3 feet  
1 mile = 5,280 feet  
1 mile = 1,760 yards

1 cup = 8 fluid ounces  
1 pint = 2 cups  
1 quart = 2 pints  
1 gallon = 4 quarts

1 pound = 16 ounces  
1 ton = 2,000 pounds

### Metric Conversions

1 meter = 100 centimeters  
1 meter = 1000 millimeters  
1 kilometer = 1000 meters

1 liter = 1000 milliliters

1 gram = 1000 milligrams  
1 kilogram = 1000 grams

### Time Conversions

1 minute = 60 seconds  
1 hour = 60 minutes  
1 day = 24 hours  
1 year = 365 days  
1 year = 52 weeks

### Formulas

$$A = lw$$

$$P = 2l + 2w$$

## Grade 5 FSA Mathematics Reference Sheet

### Customary Conversions

1 foot = 12 inches  
1 yard = 3 feet  
1 mile = 5,280 feet  
1 mile = 1,760 yards

1 cup = 8 fluid ounces  
1 pint = 2 cups  
1 quart = 2 pints  
1 gallon = 4 quarts

1 pound = 16 ounces  
1 ton = 2,000 pounds

### Metric Conversions

1 meter = 100 centimeters  
1 meter = 1000 millimeters  
1 kilometer = 1000 meters

1 liter = 1000 milliliters

1 gram = 1000 milligrams  
1 kilogram = 1000 grams

### Time Conversions

1 minute = 60 seconds  
1 hour = 60 minutes  
1 day = 24 hours  
1 year = 365 days  
1 year = 52 weeks

# Test Design - Science

- **Grade 5** students will take the **Science** assessment based on the Florida Next Generation Sunshine State Standards.

## SCIENCE CONTENT CATEGORIES

### Grade 5

Approximate percentage of raw score points for each category.

Grade	Reporting Category	Percent of Test	Number of Items
5	Nature of Science	17	60-66
	Earth and Space Science	29	
	Physical Science	29	
	Life Science	25	

## ELA SCIENCE

### PERCENTAGE OF POINTS BY DEPTH OF KNOWLEDGE (DOK)\* LEVEL Grades 5

DOK Level 1 (Low)	10-20%
-------------------	--------

DOK Level 2 (Mod)	60-80%
-------------------	--------

DOK Level 3 (High)	10-20%
--------------------	--------

*\*DOK refers to the complexity level of the cognitive process demanded by a test item rather than the difficulty of the item.*

*Level 1: Recall and Reproduction, Level 2: Skills and Concepts, and Level 3: Strategic Thinking*

# Electronic Devices

- **No electronic devices permitted during testing**
  - Students **CANNOT** have any electronic device (e.g., cell phones/smartphones, smartwatches, cameras, etc.) on them **OR** within arm's reach even if they do not use them
  - **Cause for immediate invalidation of test.**



# Helping Your Child

- **Test Preparation**

- Help your child to realize that it is important to do their best every day, as well as on the FSA.
- Review classwork with your child.
- Ensure that your child participates in the practice tests so that he/she becomes familiar with the items.
- Help your child get a good night's sleep and eat a nutritious breakfast.
- Work with your child to help them learn how to lower anxiety/stress about the test.

# FSA Scores

- Students will receive a Scaled Score (SS), Achievement Level, Percentile Rank, and Raw Scores.
- Grade 3 ELA scores will be released this summer.
- Grades 4-5 ELA and Grades 3-5 Math scores will be released this summer
- Score reports will go home to parents.

*FSA scores will arrive later due to the testing windows being extended.*

# How are FSA Results Used?

- FSA results provide teachers and schools with additional information about each student's proficiencies.
- Results are used **IN ADDITION TO** teacher observations and coursework throughout the year in making determinations of student strengths and areas of opportunity.

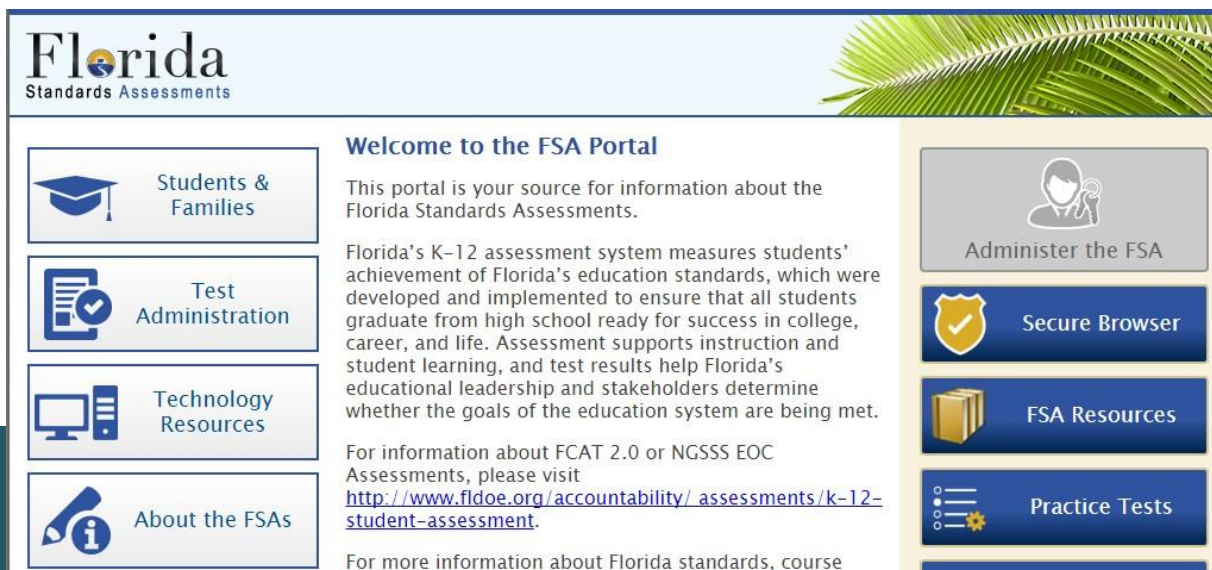


# Florida's Revised A+ Program

- The Florida Department of Education uses FSA and Science results to evaluate each public school and each school district.
- **Schools are required to test 95% of eligible students in order to earn a school grade.**
- School grades are determined through performance on the FSA English Language Arts (Reading and Writing combined), Mathematics, and State Science tests.
  - The school grade is based upon the percentage of total points earned. Each component is worth up to 100 percentage points.
  - **This year, 2020-21, there will be a different calculation because of no testing in 2019-20 school year.**

# FSA Portal

- FSA Portal: [www.FSAssessments.org](http://www.FSAssessments.org)
  - The FSA Portal was developed as a communication tool by the Florida Department of Education and contains all published information regarding FSA assessments, and released Practice Tests
  - Access to the portal and information is public.





# Helpful Resources

- FSA Portal  
[www.FSAssessments.org](http://www.FSAssessments.org)
- **Florida State Standards (Cpalms)**  
<https://www.floridastudents.org/>
- Florida Department of Education Web Site  
<http://www.fldoe.org>
- School Accountability Reports  
<http://schoolgrades.fldoe.org>

# Contact Information

## School Test Coordinators:

Literacy Coach: Marye Restrepo ([marye.restrepo@browardschools.com](mailto:marye.restrepo@browardschools.com))

ESE Specialist: Kristen Max ([Kristen.max@browardschools.com](mailto:Kristen.max@browardschools.com))

# Frequently Asked Questions

- Will virtual students have to take the FSA assessments?
  - Yes, per Florida Statute 1008.22, **all public-school students** are required to participate in the statewide assessment program.
  - Students will come on campus to take the assessments associated to their grade level (ELA, Reading, and/or Science).
  - Schools will follow all health and safety policies (e.g., social distancing, masks, cleaning)

# Frequently Asked Questions

- Is there a consequence for doing poorly on the FSA in third grade?
  - Per F.S. 1008.22(5)(b), to be promoted to grade 4, a student **must score a Level 2 or higher on the Grade 3 ELA Reading.** This requirement is not for the Grade 3 FSA Math.

# Frequently Asked Questions

- What happens if the student does not pass the FSA? Can he retake the FSA? Will my student be able to go to the next grade?
  - Students do not have the option to retake the FSA.
  - Only Grade 3 students must score a Level 2 or higher on the Grade 3 FSA ELA Reading (not the Math) assessment in order to be promoted to Grade 4 per F.S. 1008.22(5)(b).
  - Grade 4 and Grade 5 students do not have to score a level 2 or higher on their assessments.
  - All student scores are used to make instructional decisions for the following school year.
  - There are many factors when determining if a student should be retained.

# Frequently Asked Questions

- Is there any changes to test questions or scoring that will be granted this year due to COVID-19 pandemic? Understanding teachers and students may have encountered decreased time to cover material and resulting gaps in knowledge.
  - There are no changes to the FSA ELA, Math, and Science assessments.
  - The Statewide Assessment Program Information Guide provides information about FSA and NGSSS assessments, including the considerations governing item and test development, the mechanics of item and test scoring, and the meaning of the different assessment scores.
  - (<http://www.fldoe.org/core/fileparse.php/5663/urlt/swapig.pdf>)

# Frequently Asked Questions

- Will previous year's material be on the current FSA test? To clarify, will grade 3 questions be on the grade 4 test due to the fact grade 3 students did not take the FSA last school year?
  - No, students are assessed on the standards associated to their grade level. The test item specifications and test design summaries provide the standards covered on each test.
  - <https://fsassessments.org/florida-statewide-assessment-program/about-the-fsas.html>
- What accommodations will be provided to IEP or 504 students during the FSA testing (e.g., additional time, setting)?
  - Students will receive their allowable accommodations that are listed on their IEP or 504 plan.

# Frequently Asked Questions

- Will there be practice tests before the FSA?
  - Students participate in the unit assessments which have FSA-like items throughout the school year.
  - The FDOE practice tests contain sample items for specific grade level/subject tests. The purpose of the practice test is to orient students to the possible types of test items that may appear on the FSA paper-based assessments.
  - <https://fsassessments.org/students-and-families/practice-tests/paper-based-materials/>



# Questions and Answers

Q&A

You have

Questions

We have

Answers